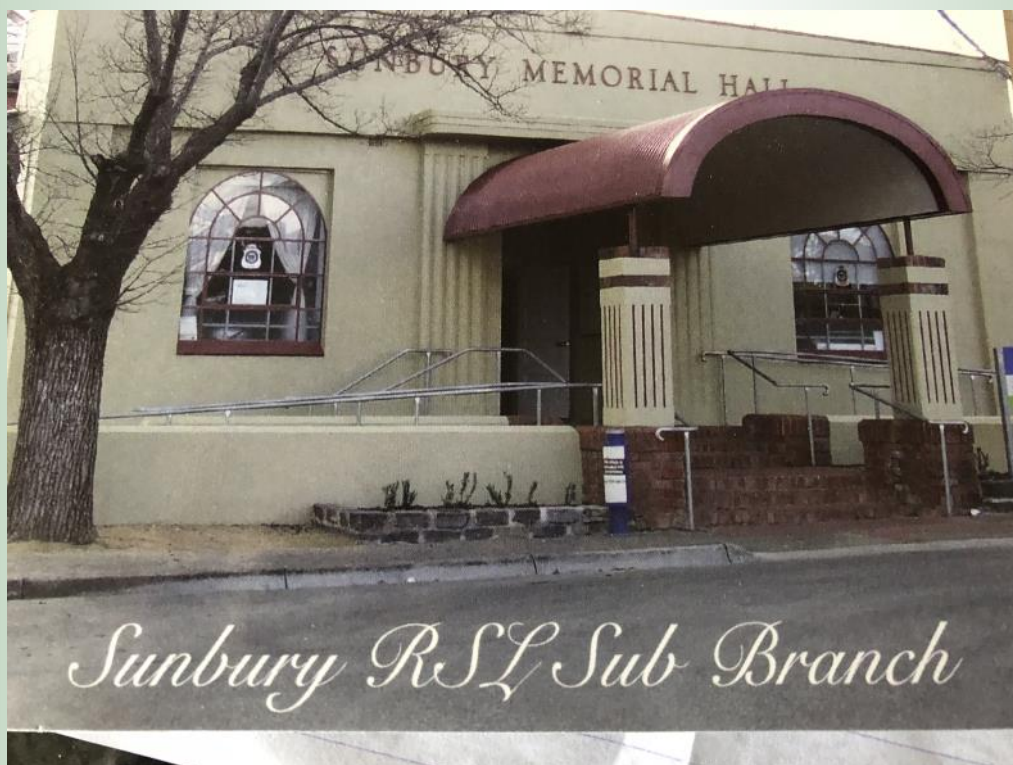




Dispatches 2019



Sunbury RSL Sub-Branch

April 2019 EDITION 48





Committee	3
Dinner Dates	4
What's on	5
Australia 1943	6
Anzac Day Sunbury	8
Anzac Melton	9
RSL Active	10
FYI	11
Puzzles	15
More FYI	18
Laugh out loud	19
Sponsors	20
Advertising	21

The End

I am hoping you enjoy the read—

Remember if you have anything for the newsletter please send it. .

We had a very nice week out 'out of office'.

With Anzac Day so very close,

I am sure Phil will be

pleased to hear from anyone who can give a couple of hours to selling .

Thanks, be happy

Deb



All printing of the RSL newsletter is courtesy of Josh Bull Member for Sunbury





President: Graeme Williams
Mobile: 0417 556 687



Vice President: Dieter Jankovic
Mobile: 0408 343 051



Vice President: Bob Bond
Mobile: 0448807155 Home: 97442237



Treasurer: Jacki Brailsford
Mobile: 0421612068



Secretary: Harry Beckwith
Mobile: 0419 003 649

Membership/Secretary: Phil Morgan 0408 994 594

Appeals: Phil Morgan 0408 994 594

Pensions & Welfare: Harry Beckwith 97444886 0419 003 649

Historians: Dieter Jankovic 0408 343 051

Harry Beckwith 97444886 0419 003 649

Peter Free: 0411 482 774

Simon Foster: 0402 781 512

Ethen Brailsford 0431103118

Peter McLellan

Nola Williams 97443008 0417296411

Bruce Mills: 97402157

Paul Levey 97443814 0427092614

Chris Ehrig

Editor: Deb Williams 0404020525



Happening April 2019

Wed 3rd	Afternoon 1-5pm
Mon 8th	General Meeting 7:30pm
Wed 10th	Afternoon 1-5pm C.o.m. 2pm
Tues 16	Dinner @ Footy Club 6:30-7pm
Wed 17th	Afternoon 1-5pm
Wed 24th	Afternoon 1-5 Anzac Day prep





Dinner @ Footy Club Dates



APRIL 16TH

MAY 21ST

JUNE 18TH

JULY 16TH

AUGUST 20TH

SEPTEMBER 17TH

OCTOBER 15TH

NOVEMBER 19TH

It is a great evening, like being out with family, only family you like.

There are senior meals

Selection of deserts

Lots of laughter

We usually gather around 6:30pm

Eating begins around 7pm

Come along, check it out.

No need to book that is all taken care of.



Wednesday arvos



1-5pm



Over 80...the drinks are on us



Look @
those smiles

Sausages in Bread?

Thanks Bill

Yes please

So
satisfied
with life



Thanks Peter

No Charge



Australia 1943

- Jan Allied troops recapture Buna in Papua.
Sanananda recaptured
- Feb Australian troops repulse the Japanese attack on Wau after reinforcements are flown in under fire.
Japanese aircraft flies over Sydney, causing an alert and anti-aircraft fire.
AIF 9th division returns to Australia from the Middle East.
- Mar Battle of the Bismarck Sea foils Japanese attempts to reinforce their New Guinea bases.
J.T. Lang expelled from the Labor Party.
Gen. Douglas MacArthur, reviewing his year in Australia, refers to the “Brisbane Line”, claiming that Australia’s plans before his arrival envisaged northern Australia in the hands of the Japanese.
National Welfare Scheme established to increase the number and variety of social services.
- April Pay-as-you-earn taxation introduced with deductions spread over the year.
- May Bus carrying soldiers and servicewomen collides with a train at a level crossing near Wodonga, 25 Killed.
Hospital ship Centaur sinks after being torpedoed off Cape Moreton, Qld. On its way to the war zone; 268 lives lost.
- June Butter and household drapery rationed.
Minesweeper HMAS Wallaroo sinks after colliding with a US liberty ship off Fremantle.
- JUL Cruiser HMAS Hobart torpedoed in the Solomons area and badly damaged.
- Aug Election for House of Representatives and half Senate; Curtin government returned with a majority in both houses; new members include the first women elected to federal parliament—Enid Lyons and Senator Dorothy Tangney.
- Sep Agreement between governments of Australia and NZ for reciprocal provision of social services comes into operation.
Menzies resumes leadership of the UAP and the opposition.
- Oct Australian forces recapture Finschhafen.
- Nov Australian forces capture Sattelberg.
- Dec Floating Bridge across the Derwent at Hobart officially opened



Australia 1943

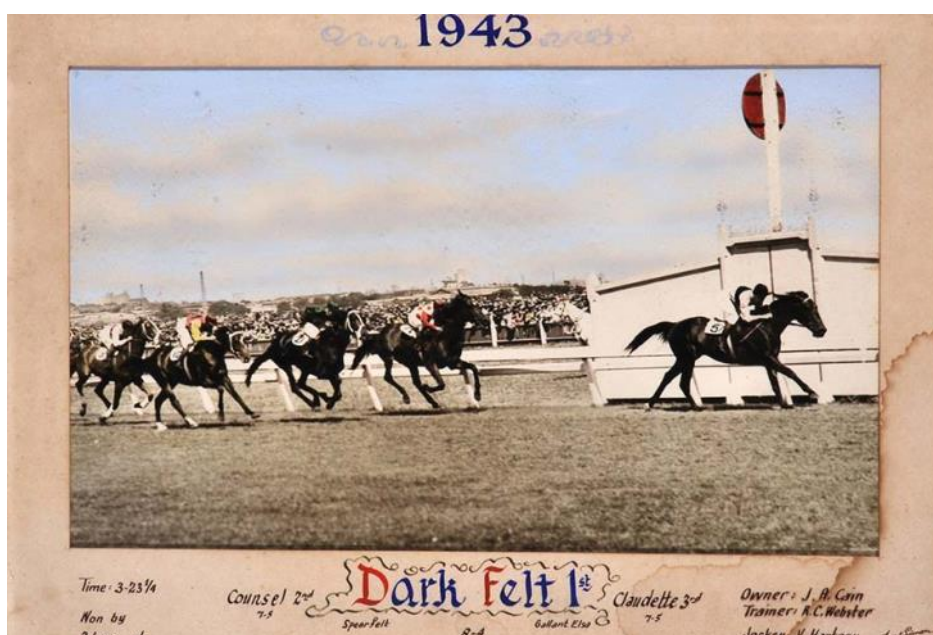
Richmond 4.2 6.5 8.8 12.14 86
Essendon 2.4 4.9 8.13 11.15 81

Goals: R.Harris 7, J. Dyer 3, J.Broadstock, R.Bawden

Best Players: Waldron, Dyer, Harris, Perkins, Merrett, Broadstock, Bawden, Oppy.



The *Melbourne Cup* is Australia's most famous annual Thoroughbred horse race. It is a In the Second World War years (1942, 1943 and 1944) the winning owner received war bonds valued at 200 pounds.





ANZAC DAY 2019

Sunbury RSL Sub Branch

March 10am

Service 10:30am

All welcome to join the RSL members for light refreshments after the service

There will be a BBQ gold coin donation

All profit going to the Air League





Melton RSL Sub Branch

PO Box 373, Melton, Victoria, 3337

Phone: 9743 1843

Email: meltonrslsec@bigpond.com



Thursday- 25th April 2019



DAWN SERVICE

5:30am Assemble

6:00am Service- High Street, outside Civic Centre

BREAKFAST

7:00am Melton Country Club

ANZAC MARCH

9:15am Assemble - Alexandra Street (Rivers Store)

9:45am March to Memorials at Civic Centre

SERVICE ON COMPLETION

Proudly supported by the



28-30 Reserve Road Melton
Ph: 9743 1843 www.meltoncc.com.au





Melton RSL Active [SEC=UNCLASSIFIED]

cook, Stephen stephen.j.cook@police.vic.gov.au

We have coming up a golf day on 18th May 2019 at Eynesbury.

This is open to veterans and their families. Cost \$40 each but there will be subsidies for all veterans through Anzac House.

www.facebook.com/events/786279075061195 (this is not a link)

We are in the process of a family day at The Path of the Horse on either 25 or 26 May for mental health and wellbeing. More to come on this one. This is open to veterans and first responders. This event is free.

www.pathofthehorse.com.au (this is not a link)

Around mid-year we are looking at a bus trip for veterans to Bendigo to see the new War Memorial and then off to the Bendigo RSL for late lunch/early dinner.



Please Note



Changes to the Vietnam Veterans Remembrance Day Service in Melton will be on Saturday 17th August as we will be taking a bus into the Shrine of Remembrance to attend service there on Sunday 18th August

Dunblane 38-40 Jackson Street, Sunbury

Statement of Significance

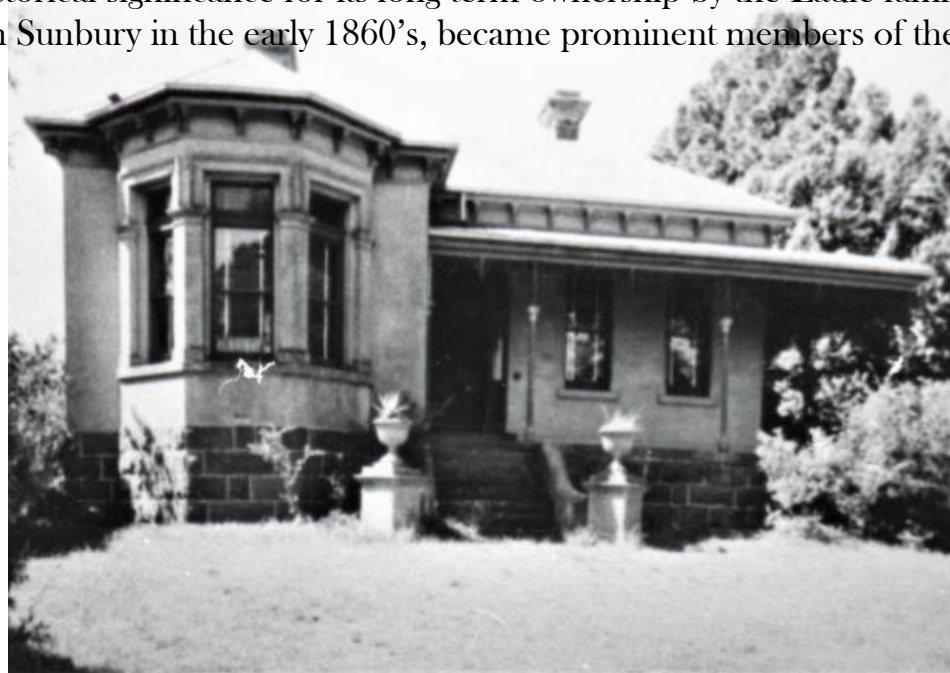
Dunblane constructed in 1893 by Peter Eadie is of local architectural and historical significance as a fine and substantially intact example of the characteristic Victoria Italianate Villa of the era.

It retains all of the essential decorative elements of the original design, and its significance is enhanced by being the only one of its type in the Sunbury Township. It was built as a large stately home on a hilltop overlooking the town by successful local businessman Peter Eadie. It retains most of its large garden.

The house is also of historical significance for its long term ownership by the Eadie family who following their arrival in Sunbury in the early 1860's, became prominent members of the community.

*For the complete article
please see*

The Platypus Press



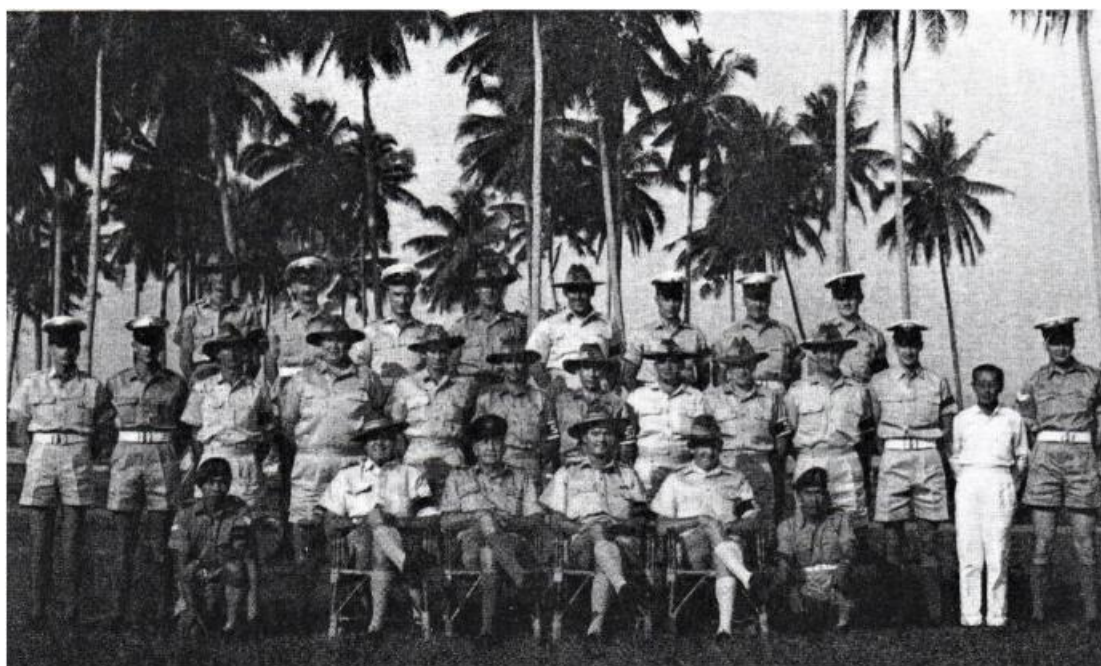
Dunblane



Origins of the RAAF Provost Service

The Royal Australian Air Force was formed in 1921 and by the mid 1930's, the total strength of the RAAF was just over 3,000 officers and men. The police element at that time consisted of two men, one at Point Cook and one at Richmond. Consequently, the Second World War found the RAAF totally unprepared for its provost requirements. In 1940, Wing Commander C.V Ashe was appointed the first Provost Marshal. He tried various forms of policing, mainly the civil police methods of the day, then on the 6th April 1941, the RAAF Service Police Unit was formed. The Deputy Provost Marshal, Flight Lieutenant (later Wing Commander) E.W Rosewarne was appointed as Commanding Officer of the Unit. The Headquarters of the Service Police Unit was formed in Melbourne with Detachments established in other states and overseas.

To cope with the increasing demands for technical and complex investigations, specialist sections were formed. These sections were all responsible to the Headquarters Unit in Latrobe Street, Melbourne, later moving to East Malvern. Other service Police Sections were located in Adelaide, Sydney, Albury, Brisbane, Darwin and Townsville.



RAAF Provosts Butterworth 1963

On the day of its birth, the Headquarters Unit possessed one table and one chair only at its premises in Latrobe Street. However, as additional officers and men were posted in, additional furniture, through the assistance of the supply branch, quickly became available. Specialist sections within the Service Police Unit included the Special Investigation branch to handle serious crime, the port Department, to prevent large scale desertions, Mobile Patrols for traffic duty, Street Patrols to ensure good contact by the troops in the streets and to prevent brawls and mob violence and the Compassionate Section to handle matters within the field.

Early in 1943, the first WRAAF's were enlisted as Service Policewomen (SPW) and their strength continued to grow until its peak, when there were more than 100 SPW's in the service. The male strength of the Provost Service reached over 1,000 before the end of the war. In addition, there were some 50 officers, both male and female.

The basic service police course lasted eight weeks and averaged forty five students per course. After the war ended, the Service Police unit was run down and eventually disbanded in 1946, although Service Policemen continued to be an important part of the RAAF. The then Provost Marshal, Wing Commander Rosewarne continued his service with the Victoria Police and retired as a Superintendent. In 1961, the RAAF Provost Unit was re-established with its Headquarters in Melbourne.

Elements of the RAAF Police Badge

The Griffin of Greek mythology has a lion's body and legs and an eagle's head and wings. The creature symbolizing union of strength and vigilance lived in Southern Russia, where it guarded gold and gems and punished human greed by killing travellers who sought to take treasure. The crown was added to symbolize the creature as restrained by the law of England.



Taken from Platypus Press (with approval)



Easter Word Search

Z S T V S C M Y N H S K S A H T L
 G V P C W I V F C A C P V E Z D D
 P A C C O E W L N M A O Y Z S L P
 P U H E G G L U T S A Z K O G X D
 J T O R B U M J U G X F O P N G A
 F O C K U I X P I R I S Y L N Y F
 D Q O Q H Z C C A L M O G I C T F
 S E L Q F H T S U L E P X E K M O
 S G A T E N N O B A R S R E G C D
 W G T H X A U X Z U A R T V S C I
 Z S E X S J H M P C B I K V S Z L
 C O P O R S L R R H B U X J O S S
 C T Y L P G L V Y I I A D X M J B
 W C N Y Z B Q K X C T E K S A B M
 K X N U M S D U C K L I N G S P A
 X K U X G N I R P S P L U O G G L
 P S B G Q D A S N A E B Y L L E J

BUNNY
 DUCKLINGS
 BONNET
 SPRING
 EGGS



DAFFODILS
 EGG
 JELLYBEANS
 RABBIT
 CHOCOLATE

LAMBS
 IRIS
 BASKET
 CHICKS
 HUNT



www.thriftymommastips.com



EASTER

BASKET
 BONNET
 BUNNY
 CANDY
 CHOCOLATE
 DYE
 EASTER
 EGGS
 GRASS
 HUNT
 LILIES
 SPRING
 SUNDAY
 TULIPS



E	R	O	B	T	E	P	E	C	T	B	I
C	A	J	L	O	H	K	D	B	P	U	Z
Z	Z	S	Y	X	N	I	N	Z	F	N	Q
E	S	F	T	A	G	N	W	E	T	N	O
J	F	I	U	E	R	P	E	E	T	Y	I
L	C	F	Q	P	R	N	K	T	S	S	R
L	I	I	N	A	F	S	C	P	U	P	C
U	Y	L	T	X	A	P	I	T	A	R	H
N	K	Y	I	B	R	L	X	U	I	I	L
G	H	S	K	E	U	T	B	P	L	N	X
C	R	I	A	T	S	D	Y	E	E	G	H
U	S	A	A	H	Y	A	D	N	U	S	L
J	O	C	S	L	Z	H	S	Q	Q	V	S
R	N	T	R	S	C	H	E	M	P	U	I
H	U	N	T	L	C	A	N	D	Y	T	B
S	A	C	M	R	E	G	G	S	X	I	L
T	U	C	H	O	C	O	L	A	T	E	T

created by Simply Kelly Designs - simplykellydesigns.com

Name: _____

HAPPY EASTER



Can you find these words hidden in the puzzle?

BASKET

BUNNY

CANDY

CARROT

CHOCOLATE

COLORS

EGGS

GRASS

HARD-BOILED

HIDDEN

HOPPING

JELLYBEAN

LAMB

LILY

NEST

RABBIT

SEARCH

SPRING

SUNDAY



Statement of Significance

Last updated on - May 29, 2000



What is significant?

St James Old Cathedral was constructed on a Crown grant site of 5 acres of land bounded by Collins, William and Bourke Streets with the foundation stone being laid on 9 November 1839 by Charles Joseph La Trobe, Superintendent of the District of Port Phillip. A simple timber pioneer church which preceded it was built with funds largely subscribed by Presbyterians and other denominations who made up the small community. Opened on 11 February 1837, St James was designed by Robert Russell, a London architect and surveyor who had arrived in Melbourne from Sydney on 5 October 1836. The Colonial Georgian building was constructed on bluestone footings of locally quarried sandstone. The unfinished building was opened for worship on 2 October 1842, and it was completed in 1847.

The Anglican Diocese of Melbourne was founded in 1847, and on 29 June 1847 Charles Perry was consecrated in Westminster Abbey as Melbourne's first Bishop. He was enthroned in St James on 28 January 1848, and St James became the first Cathedral church of the new diocese, although it was not consecrated until 1853. When St Paul's Cathedral opened for worship on 22 January 1891 St James reverted to the status of a parish church. The diminished congregation, pressure of occupying valuable city land, and maintenance problems resulted in the church narrowly escaping demolition. It was relocated stone by numbered stone to its present site under the direction of Messrs Thomas Watts and Son, architects, re-consecrated by Archbishop Lowther Clark, and re-opened for worship on 19 April 1914. Changes made to the original design at the time of relocation include reorientation from east west to north south, the tower shortened by one stage, the main ceiling lowered a little, the sanctuary shortened by a few inches, the space between the main gallery remodelled to form a lobby and two vestries with passage and gallery stairs behind them. Two side entrances were constructed to serve the new passage.

How is it significant?

St James Old Cathedral is of historical and architectural significance to the State of Victoria.

Why is it significant?

It is of historical importance as the first Cathedral in Melbourne, the earliest surviving church in Victoria, and one of Melbourne's earliest surviving buildings.

It is of architectural importance as a rare example in Melbourne of a Colonial Georgian style building of simple design and pleasing proportions with Greek detailing at the doorways, and the only known surviving work of architect Robert Russell. Although he worked in London with eminent English architect John Nash, the style reflects his experiences in Sydney, especially the work of his contemporary Francis Clarke as well as of Francis Greenway.

The interior is important for rare and unusual features for Victoria, such as the traditional box pews of cedar, side galleries or Vice-Regal boxes originally for the use of Governor La Trobe and the Chief Justice, Baptismal font with the white marble bowl probably dating from the 17th century and coming from St Katherine's Abbey on the banks of the Thames, two mahogany pulpits presented by the ladies of the congregation in 1847. The World War 1 honour board carved by well known master wood carver Robert Prenzel and the World War 2 honour board which was copied from the earlier honour board. The stained glass windows are also of note with the 'east window' being possibly by the Melbourne firm of Ferguson and Urie, and the five windows by Christian Waller, wife of artist Napier Waller.



SUSIE LEE DONE FELL IN LOVE,
SHE PLANNED TO MARRY JOE.
SHE WAS SO HAPPY 'BOUT IT ALL,
SHE TOLD HER PAPPY SO.

PAPPY TOLD HER, SUSIE GAL,
YOU'LL HAVE TO FIND ANOTHER.
I'D JUST AS SOON YO' MA DON'T KNOW,
BUT JOE IS YO' HALF BROTHER.

SO SUSIE PUT ASIDE HER JOE
AND PLANNED TO MARRY WILL.
BUT AFTER TELLING PAPPY THIS,
HE SAID, 'THERE'S TROUBLE STILL!'

YOU CAN'T MARRY WILL, MY GAL,
AND PLEASE DON'T TELL YO' MOTHER.
BUT WILL AND JOE, AND SEVERAL MO'
I KNOW IS YO' HALF BROTHER.

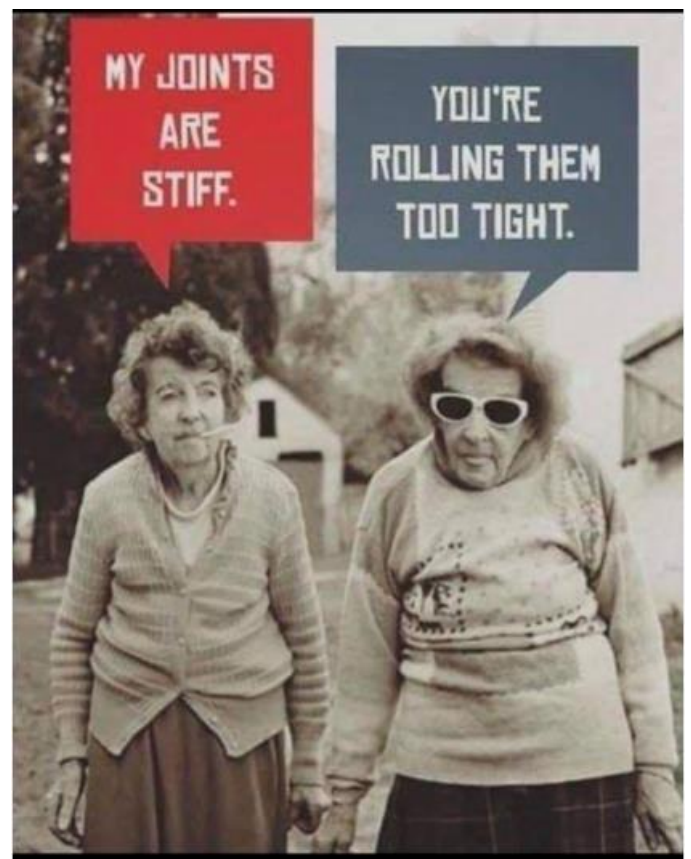
BUT MAMA KNEW AND SAID, MY CHILD,
JUST DO WHAT MAKES YO' HAPPY.
MARRY WILL OR MARRY JOE;
YOU AIN'T NO KIN TO PAPPY.

An elderly lady was standing at the railing of the cruise ship holding her hat tight so that it would not blow away in the wind. A gentleman approached her and said, "Pardon me, madame...I do not intend to be forward, but did you know that your dress is blowing up in this high wind?"

"Yes, I know," said the lady, "I need both my hands to hold onto this hat."

"But madame, you must know that you are not wearing any panties and your privates are exposed!" said the gentleman in earnest.

The woman looked down, then back up at the man and replied, "Sir, anything you see down there is 75 years old... I just bought this hat yesterday!"



Husband is walking behind his wife and says, "Your bottom is getting so big it looks like an old washing machine."

The woman keeps quiet and keeps walking.

Bedtime comes around, the husband starts getting amorous.

Wife says: "I'm not starting the old washing machine for such a small load. You'll have to do it by hand!"





Graham and I had a week at the Gold Coast. It was really nice relaxing but ended way too quickly





These businesses sponsor us, let us return the favour



These businesses sponsor us, let us return the favour



These businesses sponsor us, let us return the favour



These businesses sponsor us, let us return the favour



These businesses sponsor us, let us return the favour



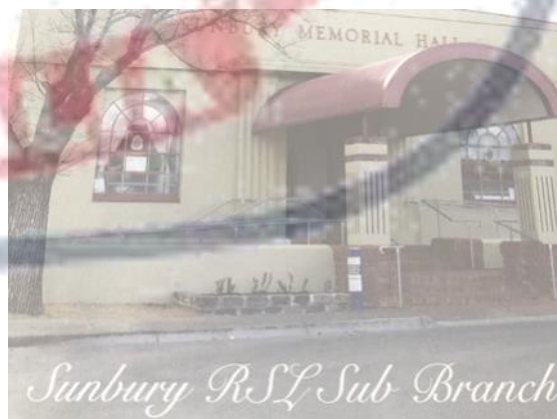
It is very important the Sunbury RSL has up-to-date information about you.

There have been several instances where a member has been missed from the usual gatherings, but we have been unable to contact them because our records are not current.

We can often help with transport, company etc. but we have to be able to find you.

Please fill in the next page, bring it to the RSL when you come, or post it.

We will be very pleased to hear from you.



Sunbury RSL Sub Branch



RSL Sunbury

The RSL needs to keep the details of members up to date (securely retained).

There have been instances in the past when members are recouping from matters but not knowing their whereabouts, we the RSL are unable to contact them.

Please complete the following details and return to the Secretary

Thank you.

MEMBER

Name	_____	Spouse	_____
Address	_____	Suburb	_____
Postcode	_____	Phone	_____
Mobile	_____	Email	_____

Type of membership (circle one) Service Affiliate Associate Social

Armed Forces (circle) Army Navy Airforce

Theatre _____

Time Frame _____

Date Joined R.S.L. __/__/____

NEXT OF KIN

Name	_____	Spouse	_____
Address	_____	Suburb	_____
Postcode	_____	Phone	_____
Mobile	_____	Email	_____

Office Use Only

Received: __/__/____ Updated On: __/__/____ By: _____





**TOBIN BROTHERS
FUNERALS**

Celebrating Lives

EMMA STIRLING
Branch Manager

Telephone: 97409500
Mobile: 0413208028

All Australian Owned



Cafe Circe

109 Oshanassy St, Sunbury, Victoria 3429, Australia

+61 3 9740 4448



Sunbury Trophy Centre
ph 0403 085 072



PJ's PET WAREHOUSE & AUARIUM

OPEN 7 DAYS
Phone 97403500
104 Horne Street, Sunbury Vic 3429
pjspet@gmail.com



AutoLube
SERVICE & REPAIR CENTRE



4/99 Horne Street, Sunbury. Vic 3429
LIAM BOYLE Ph: 97463799

